

Acute Mental Health Inpatient Centre

# A 'positive space for healing'

**£33m**

/ Project value

**August 2016**

/ The build commenced

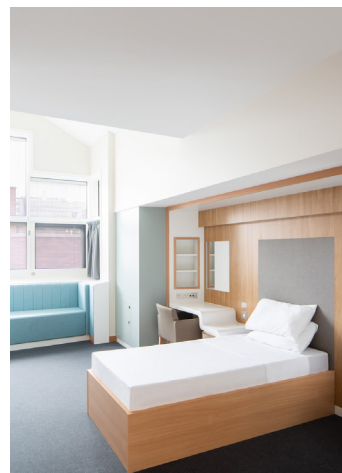
**June 2019**

/ The completion

In constructing the Acute Mental Health Inpatient Centre (AMHIC), we have created a "positive space for healing" where patients experience "inclusion and normalisation". The £33m purpose-built unit, the first of its kind in Belfast, has enabled the Belfast Health and Social Care Trust to cater for mental health patients in one central location and accelerate the closure of antiquated buildings spread across multiple locations. The 10,000m<sup>2</sup> single storey centre, providing 74 acute mental health beds and six psychiatric intensive care beds, consists of five separate interconnecting buildings arranged around a cloistered central courtyard, and communal and administration areas.

## The brief

The brief was to create a state-of-the-art environment "conducive to recovery" situated in "the heart of the community". The centre is a significant part of the Trust's modernisation of mental health services, and the strategic rationalisation of its estate.



"GRAHAM-Bam have sought to understand the Trust's requirements and have fully engaged with us to ensure that we were working towards a common goal of minimising risk to our clients."

Karen Brookes  
Director of Capital Projects at Belfast Health and Social Care Trust

“Throughout the construction period, the focus remained firmly on meeting the needs of the client, which has allowed us to deliver an acute mental health inpatient hospital, which will support the modernisation of inpatient care in Belfast. We look forward to continuing to work with GRAHAM-Bam.”

Karen Brookes  
Director of Capital Projects at Belfast Health and Social Care Trust

### The challenges

The Acute Mental Health Inpatient Centre is located at Belfast City Hospital, which is a live acute hospital that remained fully operational during construction.

### The solution

The centre is the first purpose-built facility for acutely mentally ill adults within the Belfast area. Every aspect of its design was carefully considered, including the colours, lighting, materials, furniture, fixtures and fittings to ensure a “21st century environment” that will help “improve the overall inpatient experience”. The centre’s five main wards have been arranged as rooms around a garden with bedrooms on three sides of the garden and social facilities on the other. A single sided mostly glazed circulation corridor acts as a quasi-cloister in each garden. The intelligent arrangement of wards, to ensure a discrete service route, focuses patients on the generous garden space at the heart of each ward which also provides a major facility for the patients to use. Individual rooms benefit from their own pitched roofs to create a “sense of home”. Importantly, the entire building is serviced by a first-floor services zone, ensuring maintenance can be completely separated from the clinical areas, guaranteeing patient privacy at all times. It is a structural steel frame building, generally on piled foundations, and the external walls consist of insulated cavity with facing brick outer leaf. The windows are aluminium and composite and the roof is a warm roof, single-ply membrane on ply deck. At this year’s CCS Awards, the centre picked up a Gold Award as well as Most Considerate Site Runners-up.

### Outputs & Benefits

**CCS:** It was described as an “exceptional” site by the CCS monitors. It achieved a rare high score of 47/50, which includes recognition for innovation in both the “Community” and “Workforce” categories

**Social Value:** 79 individuals took up training, placement or employment opportunities on the project.

**RSPB Pledge for Nature:** We incorporated swift bricks within the new build that were not in the original design

**Ancillary works:** These included the construction of new, and the modification of existing, pedestrian and road access routes to the new/adjacent facilities, external services, drainage, roads, fences/ boundary and retaining walls, car parks and landscaping works

**Waste reduction:** We achieved a 2.5tn volume of construction/ demolition waste generated per £100k construction value – this significantly exceeded the <7.2tn KPI target



For more information on how we're delivering lasting impact:

+44 (0) 28 9268 9500

info@graham.co.uk

graham.co.uk

**GRAHAM**